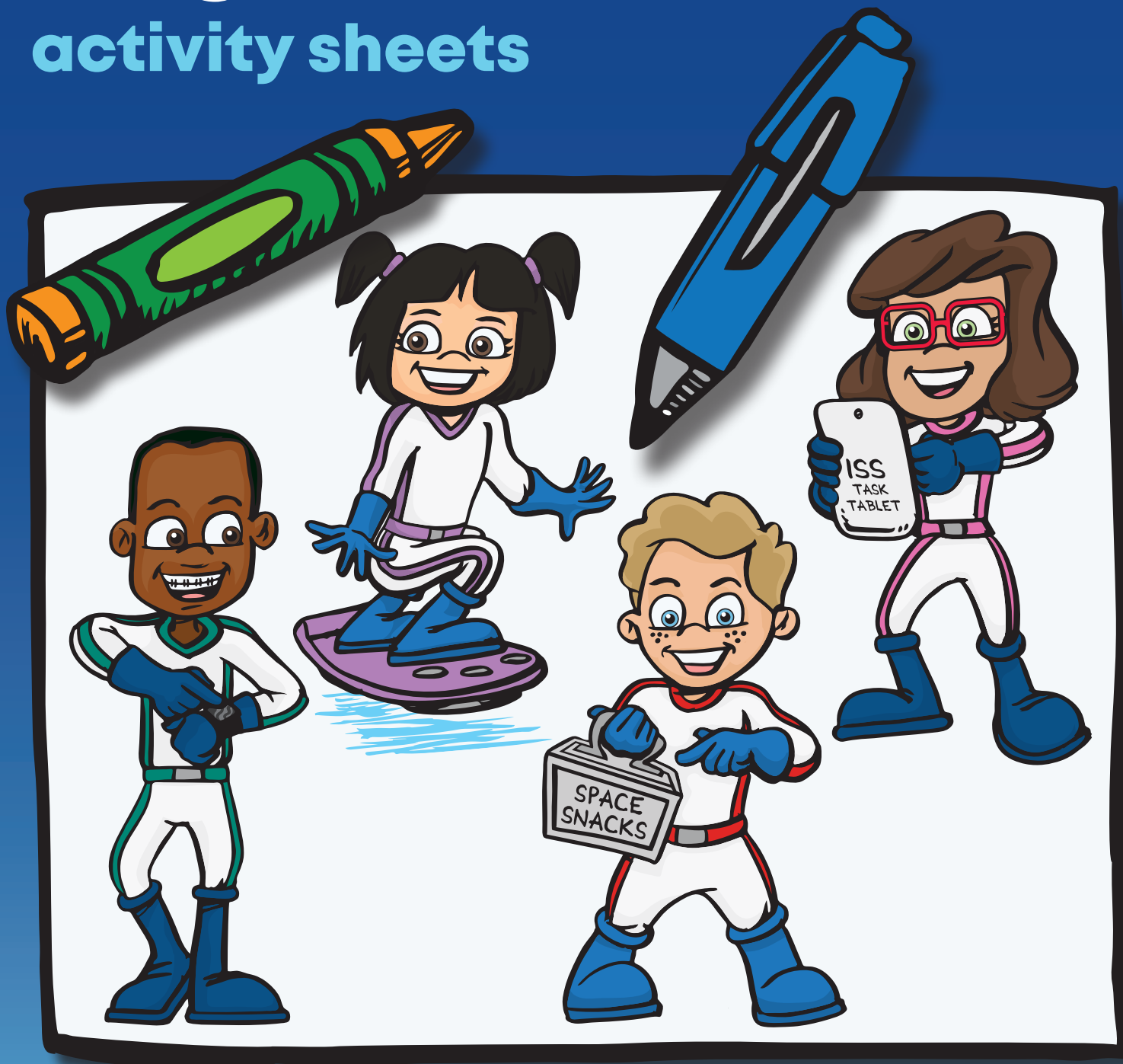


# Aa-Zz

## activity sheets

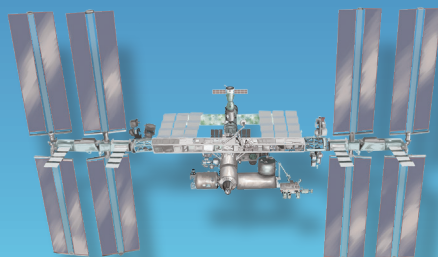
National Aeronautics and  
Space Administration



COMMERCIAL  
**CREW**

[www.nasa.gov](http://www.nasa.gov)

SP-2018-10-1532-KSC



# Aa

## for astronaut

National Aeronautics and  
Space Administration



astronaut

Aa Aa

COMMERCIAL  
**CREW**

[www.nasa.gov](http://www.nasa.gov)

SP-2018-12-1821-KSC

On Earth and in space, an **astronaut** needs  
air, food, and water to survive.

# Bb

## for build

National Aeronautics and  
Space Administration



DRAW AN IDEA THAT YOU  
WOULD LIKE TO BUILD.

build

B	b	B	b								
---	---	---	---	--	--	--	--	--	--	--	--

COMMERCIAL  
**CREW**

[www.nasa.gov](http://www.nasa.gov)

SP-2019-01-018-KSC

What type of rocket would you **build** to help  
NASA bring people to space?

# Cc

## for crew

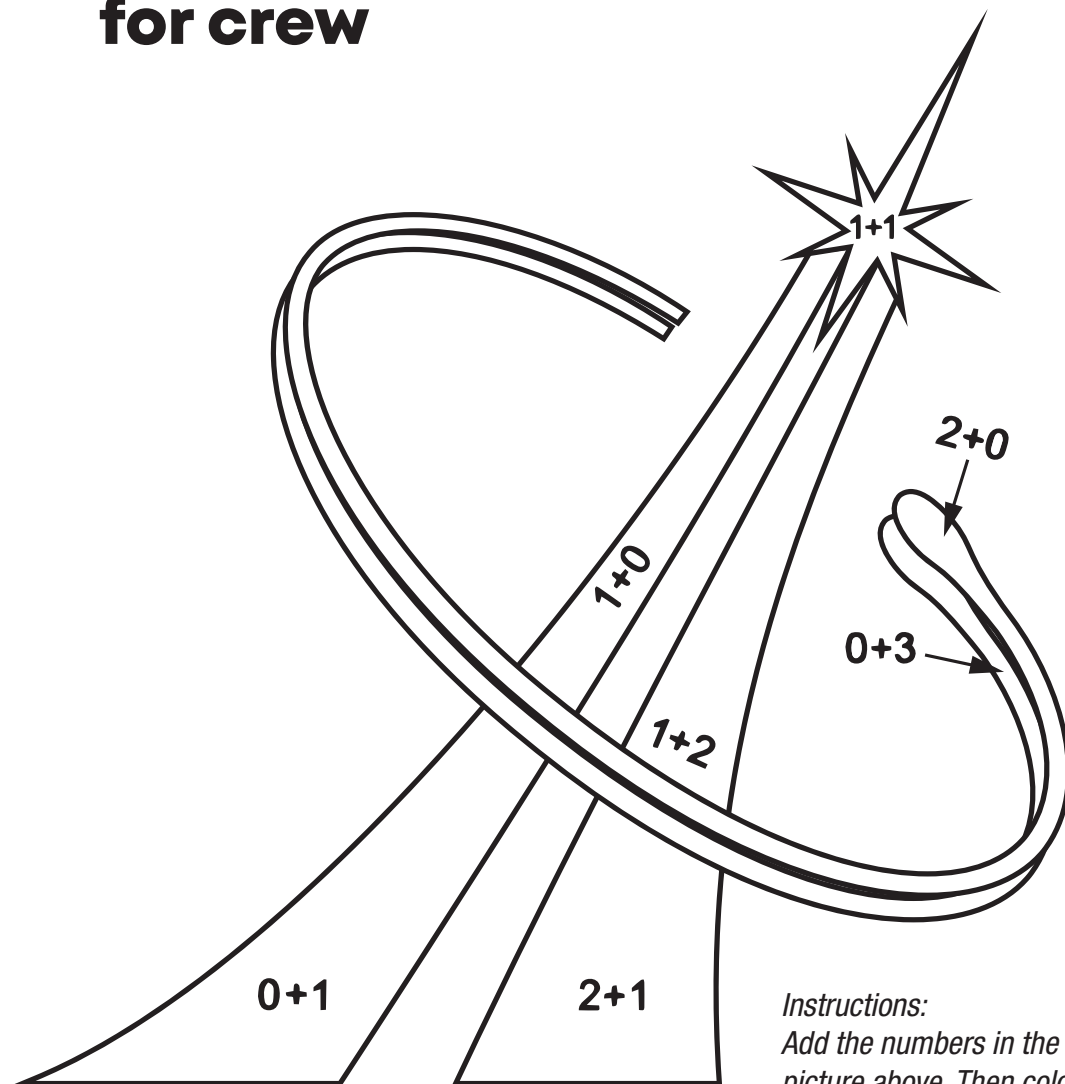
National Aeronautics and  
Space Administration



3 = blue

2 = yellow

1 = red



*Instructions:*  
Add the numbers in the addition problems in the picture above. Then color each part of the picture using the color that matches the sum.

crew

C	c	C	c										
---	---	---	---	--	--	--	--	--	--	--	--	--	--

COMMERCIAL  
**CREW**

[www.nasa.gov](http://www.nasa.gov)

SP-2019-02-258-KSC

Commercial Crew Program will launch astronauts to space on American rockets.

# Dd

## for direction

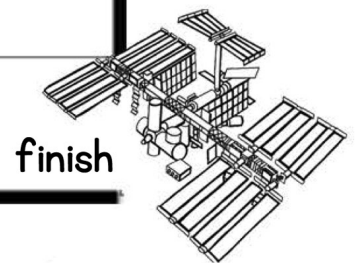
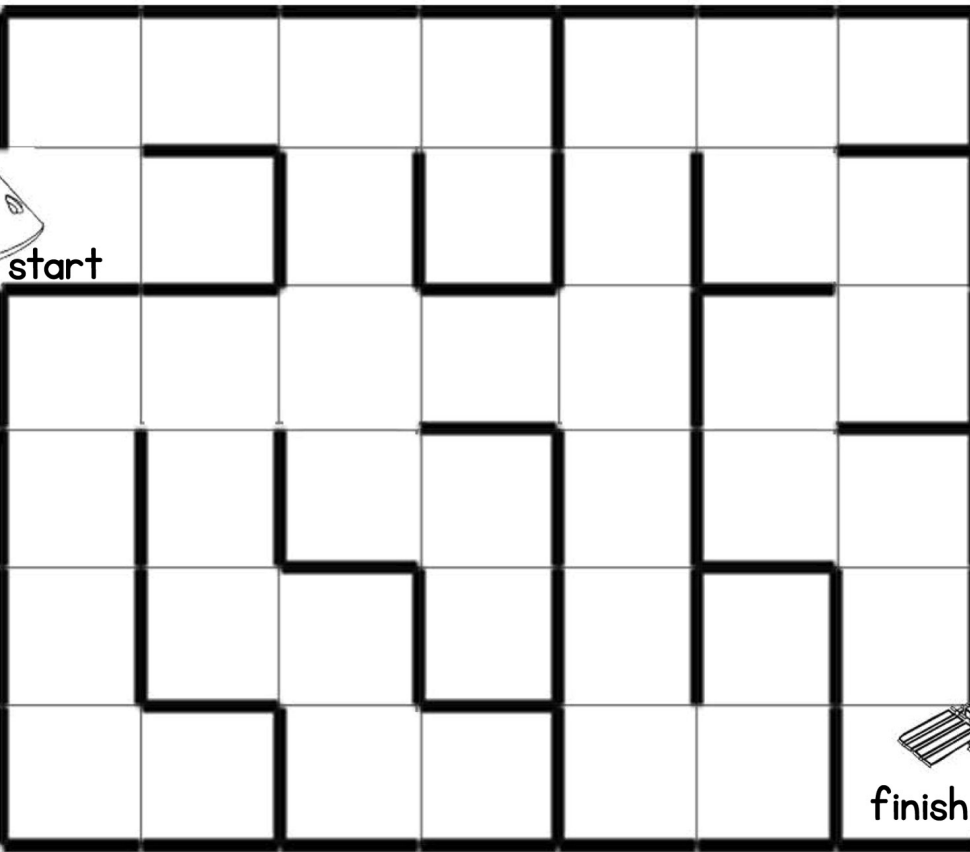
National Aeronautics and  
Space Administration



*Instructions:*

*As you travel the maze, try writing out the directions that the crew should take to successfully complete the journey.*

*(For example: move up two squares, then right two squares.)*



direction

D	d	D	d								
---	---	---	---	--	--	--	--	--	--	--	--

COMMERCIAL  
**CREW**

[www.nasa.gov](http://www.nasa.gov)

SP-2019-02-259-KSC

Help provide the right **direction** through the maze so the crew can arrive safely to the International Space Station.

# Ee

## for exercise

National Aeronautics and  
Space Administration



exercise

E	e	E	e										
---	---	---	---	--	--	--	--	--	--	--	--	--	--

COMMERCIAL  
**CREW**

[www.nasa.gov](http://www.nasa.gov)

SP-2019-01-019-KSC

**Exercise** is important for health and fitness.  
What types of exercises do you think  
astronauts do in space?

# Ff

## for force

National Aeronautics and  
Space Administration



CLICK ON THE LINK BELOW TO LEARN  
ABOUT A FUN STRAW ROCKET ACTIVITY:

GRADES K-8:

[HTTPS://WWW.NASA.GOV/AUDIENCE/  
FOREducATORS/TOpNAV/MATERIALS/  
LISTBYTYPE/3\\_2\\_1\\_PUFF.HTML](https://www.nasa.gov/audience/foreducators/topnav/materials/listbytype/3_2_1_puff.html)

GRADES 4-8:

[HTTPS://WWW.JPL.NASA.GOV/EDU/TEACH/  
ACTIVITY/STRAW-ROCKET/](https://www.jpl.nasa.gov/edu/teach/activity/straw-rocket/)

force

F	f	F	f								
---	---	---	---	--	--	--	--	--	--	--	--

COMMERCIAL  
**CREW**

[www.nasa.gov](http://www.nasa.gov)

SP-2019-02-156-KSC

A push or pull is a **force** that makes things move. Experiment with **force** by building your own straw rocket.

# Gg

for gravity

National Aeronautics and  
Space Administration



gravity

G	g	G	g								
---	---	---	---	--	--	--	--	--	--	--	--

COMMERCIAL  
**CREW**

[www.nasa.gov](http://www.nasa.gov)

SP-2019-01-021-KSC

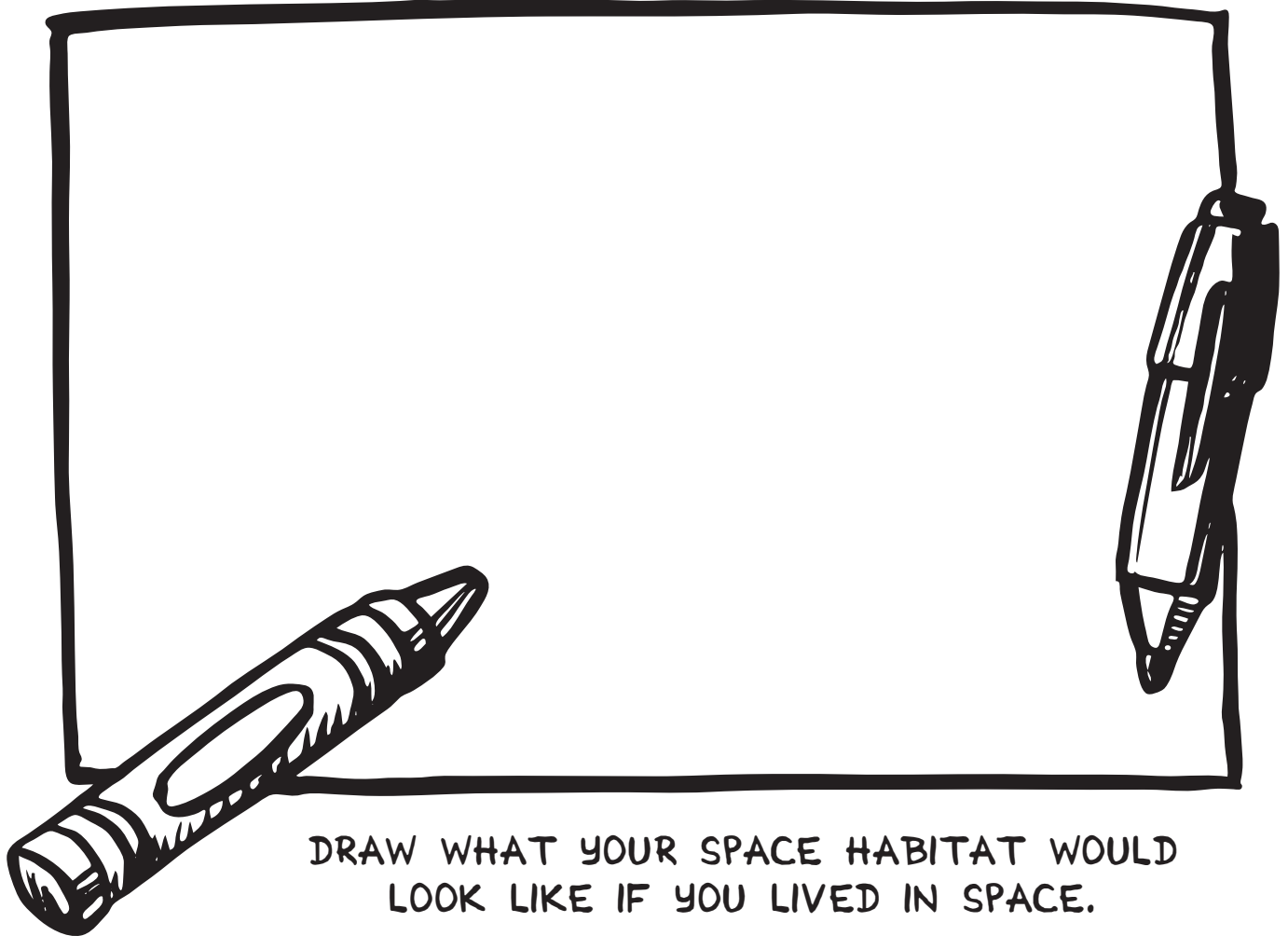
When you jump in the air, **gravity** is a force that pulls you back down toward Earth.



# Hh

## for habitat

National Aeronautics and  
Space Administration



habitat

H	h	H	h											
---	---	---	---	--	--	--	--	--	--	--	--	--	--	--

COMMERCIAL  
**CREW**

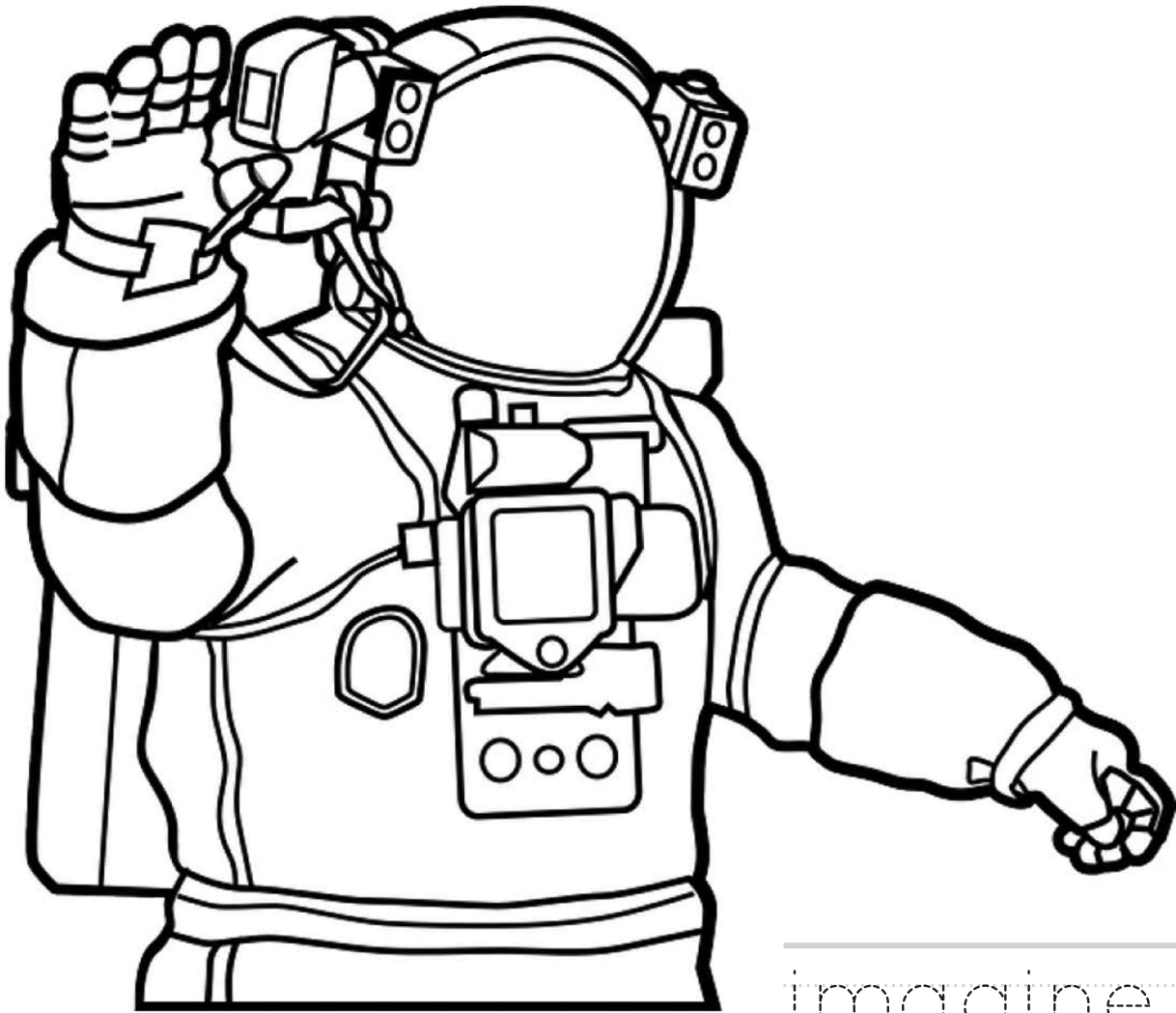
[www.nasa.gov](http://www.nasa.gov)

SP-2019-02-284-KSC

A habitat is a place to live. What would you bring with you?



# Ii for imagine



imagine

i	i	i	i																
---	---	---	---	--	--	--	--	--	--	--	--	--	--	--	--	--	--	--	--

COMMERCIAL  
**CREW**

[www.nasa.gov](http://www.nasa.gov)

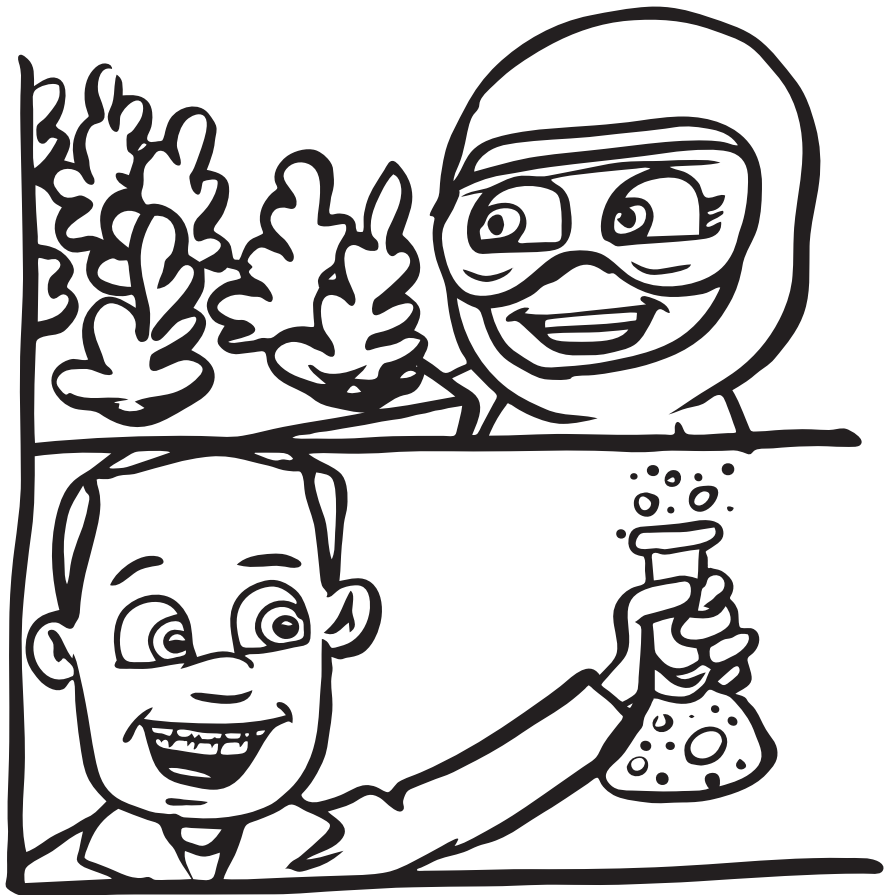
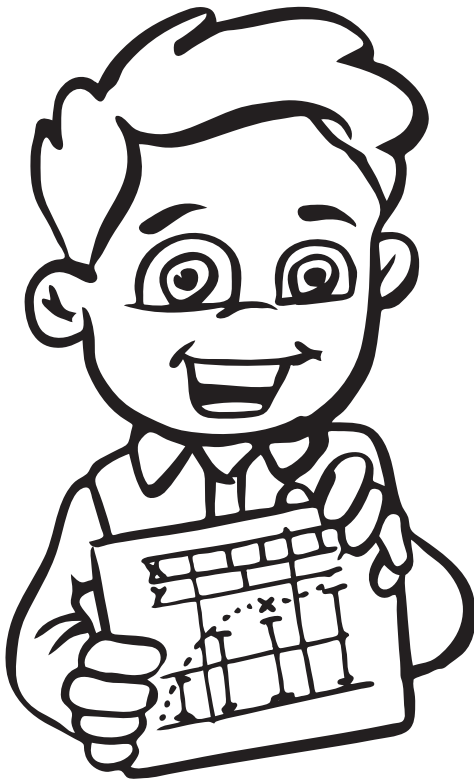
SP-2019-02-260-KSC

**Imagine** yourself as an astronaut. Draw your own face in the helmet above to show how you look in a spacesuit.

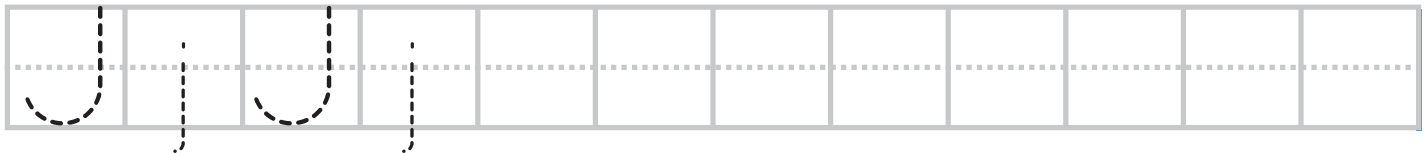
# Jj

## for jobs

National Aeronautics and  
Space Administration



jobs



COMMERCIAL  
**CREW**

[www.nasa.gov](http://www.nasa.gov)

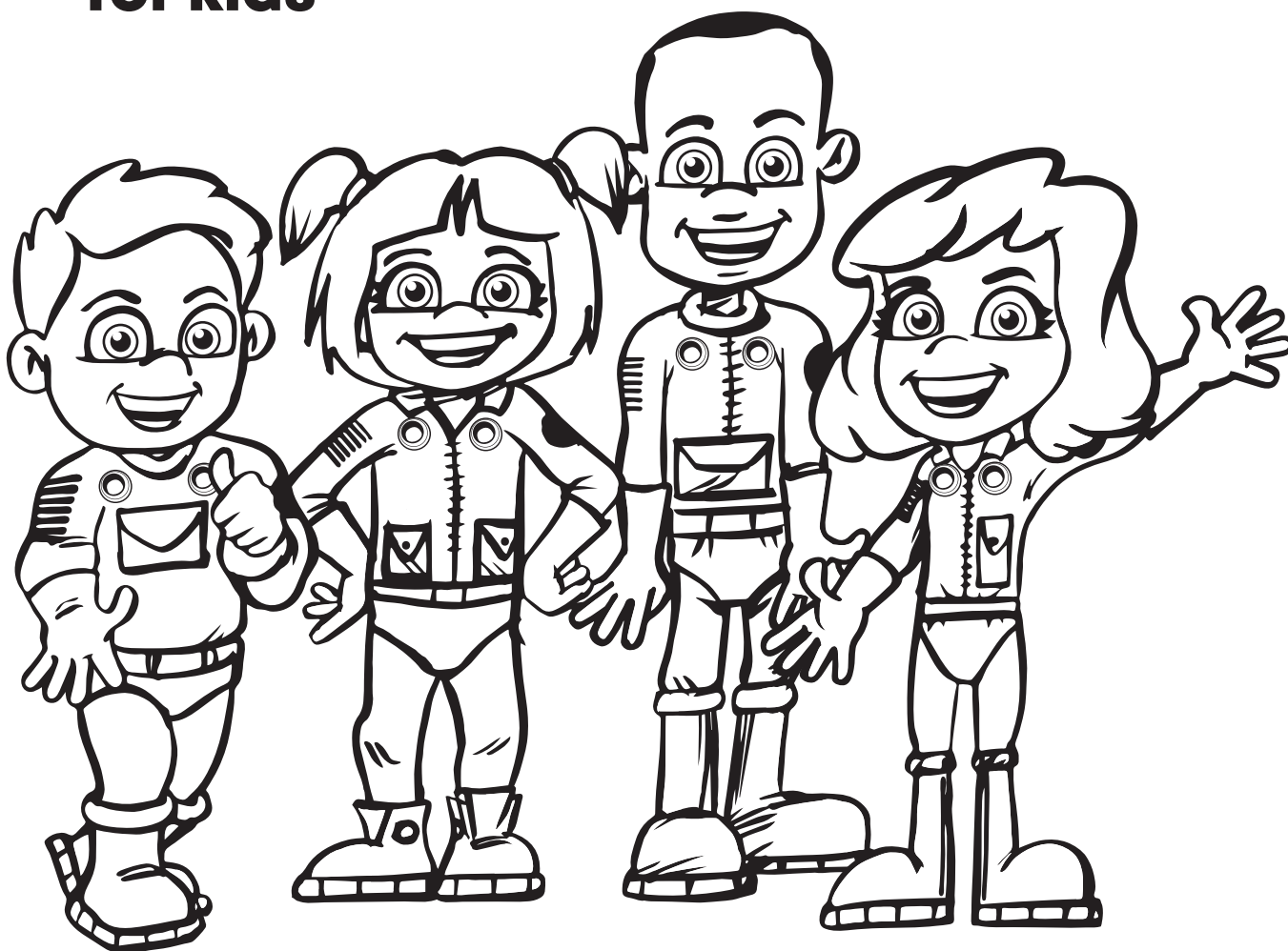
SP-2019-01-022-KSC

Scientists, engineers, teachers, lawyers,  
nurses and even artists can get jobs at  
NASA.

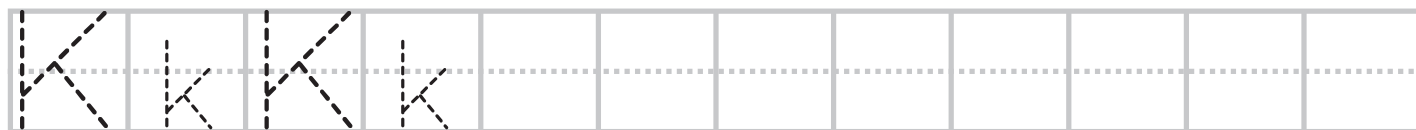
# Kk

for kids

National Aeronautics and  
Space Administration



kids



COMMERCIAL  
**CREW**

[www.nasa.gov](http://www.nasa.gov)

SP-2019-02-064-KSC

NASA Kids' Club is a website for **kids** to explore and learn more with NASA. Join in on the fun, go to [nasa.gov/kidsclub](http://nasa.gov/kidsclub).

# L

## for Launch

National Aeronautics and  
Space Administration



launch

L	L	L	L										
---	---	---	---	--	--	--	--	--	--	--	--	--	--

COMMERCIAL  
**CREW**

[www.nasa.gov](http://www.nasa.gov)

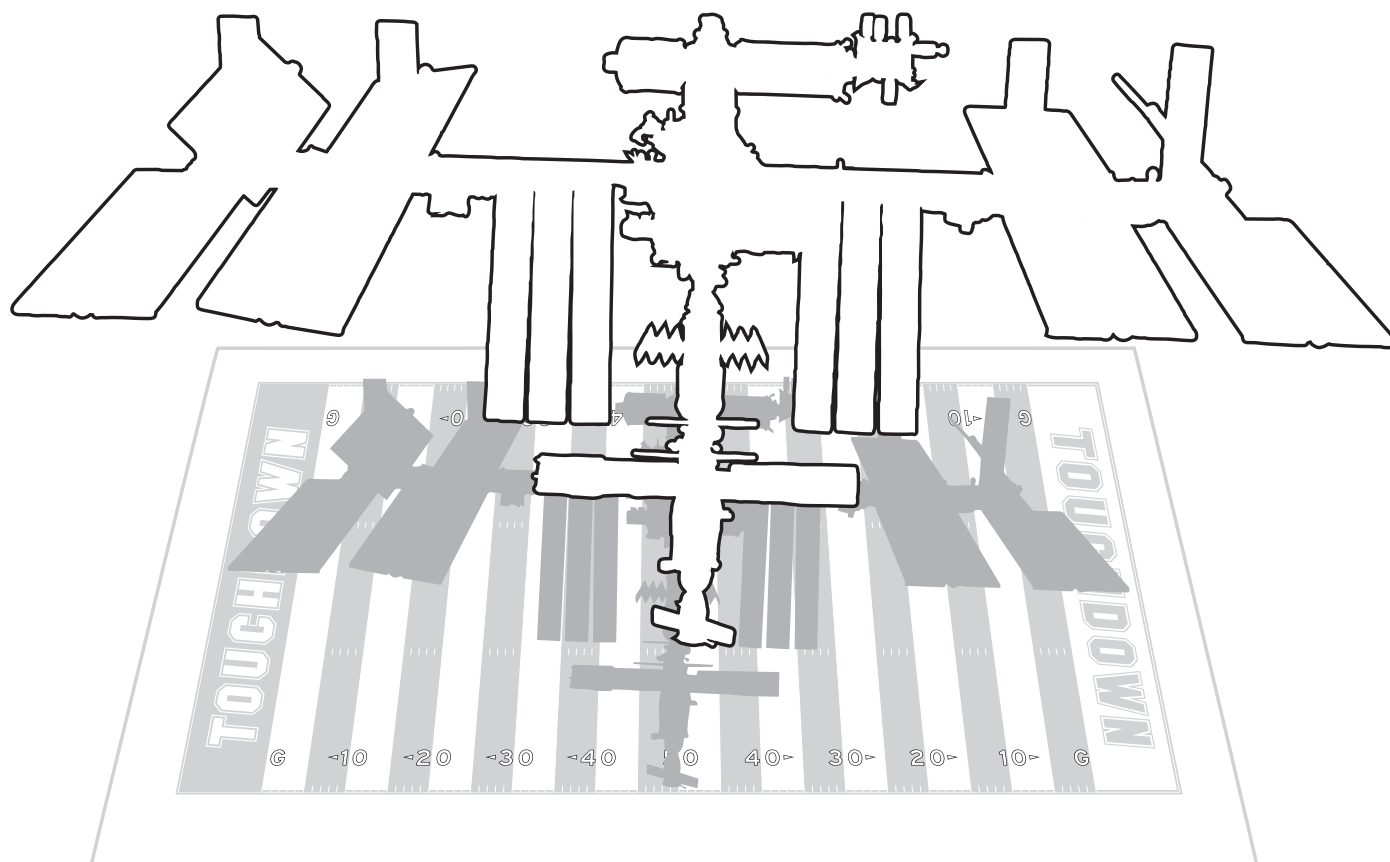
SP-2018-10-1532-KSC

NASA does a countdown before **launch** to make sure the rocket and crew are ready to liftoff into the sky.

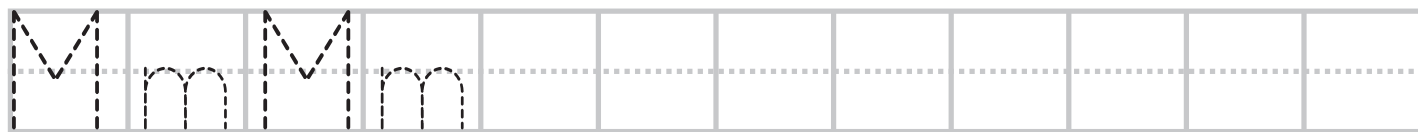
# Mm

for measure

National Aeronautics and  
Space Administration



measure



COMMERCIAL  
**CREW**

[www.nasa.gov](http://www.nasa.gov)

SP-2019-02-285-KSC

The International Space Station has a **measure** of 357 feet long, nearly the full length of an American football field.

# Nn

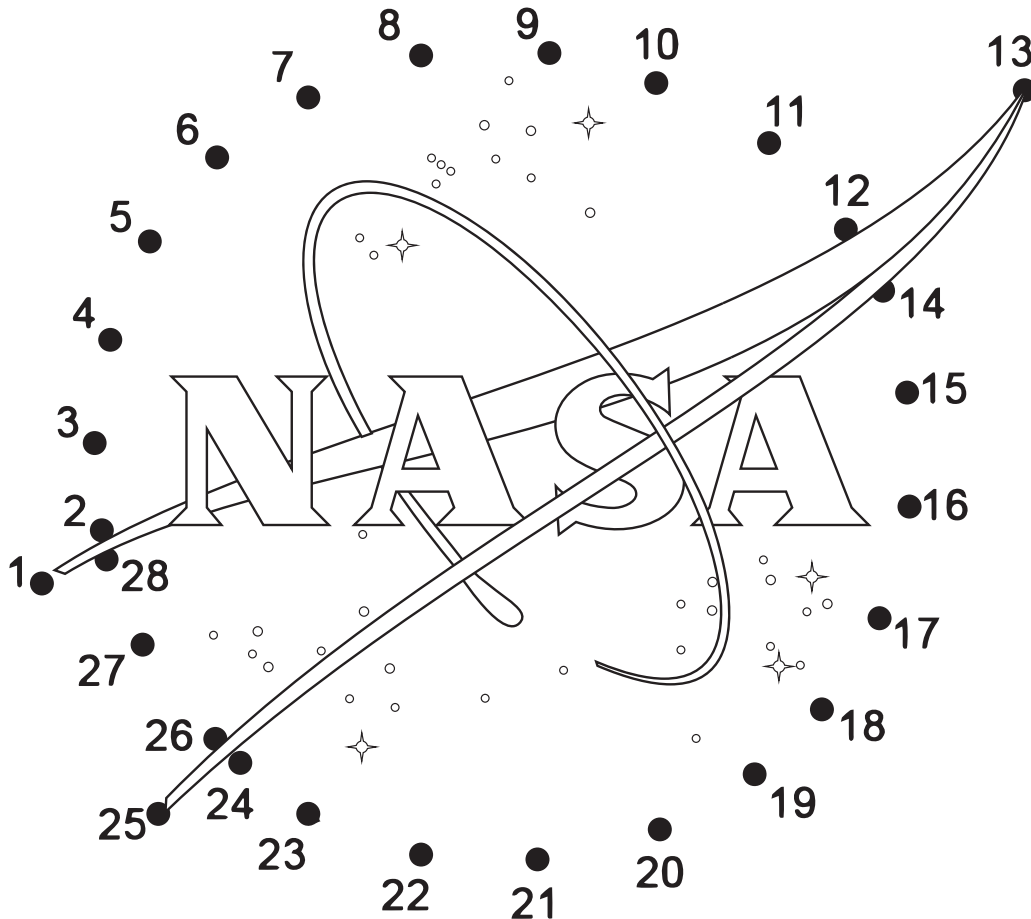
## for NASA

National Aeronautics and  
Space Administration



*Instructions:*

*Connect-the-dots to complete the sphere then color it blue. Color the vector (wing shape) red, and color the stars, letters, and the spacecraft orbit circle that flies around them white.*



NASA

N	n	N	n										
---	---	---	---	--	--	--	--	--	--	--	--	--	--

COMMERCIAL  
**CREW**

[www.nasa.gov](http://www.nasa.gov)

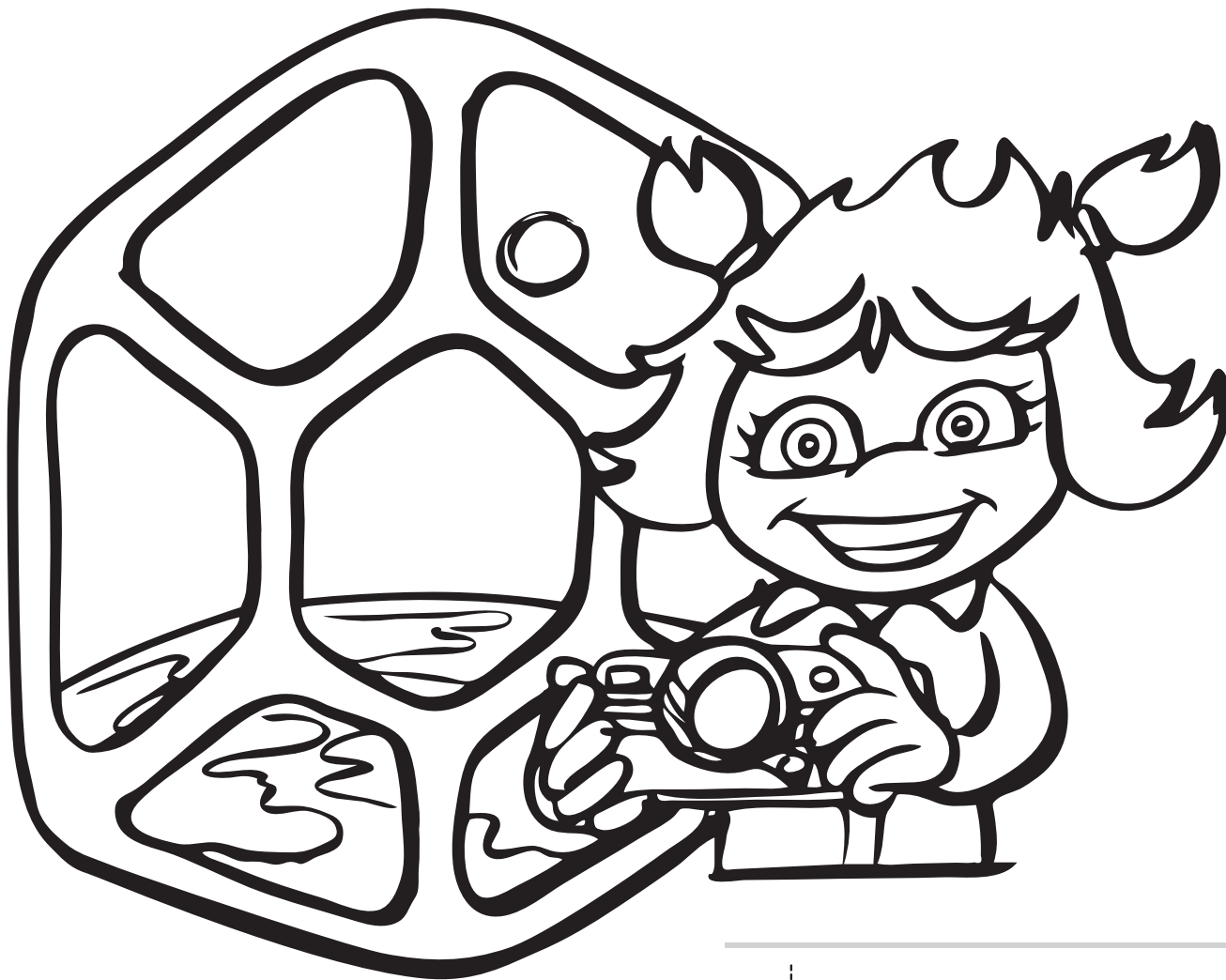
SP-2019-02-261-KSC

Founded in 1958, the National Aeronautics and Space Administration is commonly known as **NASA**. The blue logo is sometimes called, "the meatball!"

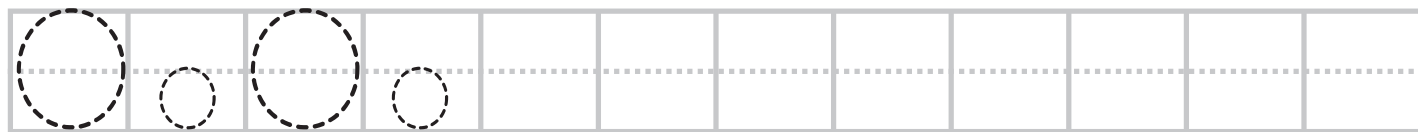


Oo

for observe



observe



COMMERCIAL  
**CREW**

[www.nasa.gov](http://www.nasa.gov)

SP-2019-02-066-KSC

NASA uses many tools to **observe** Earth, our solar system and deep space.

Check out “Earth Observatory for Kids” at

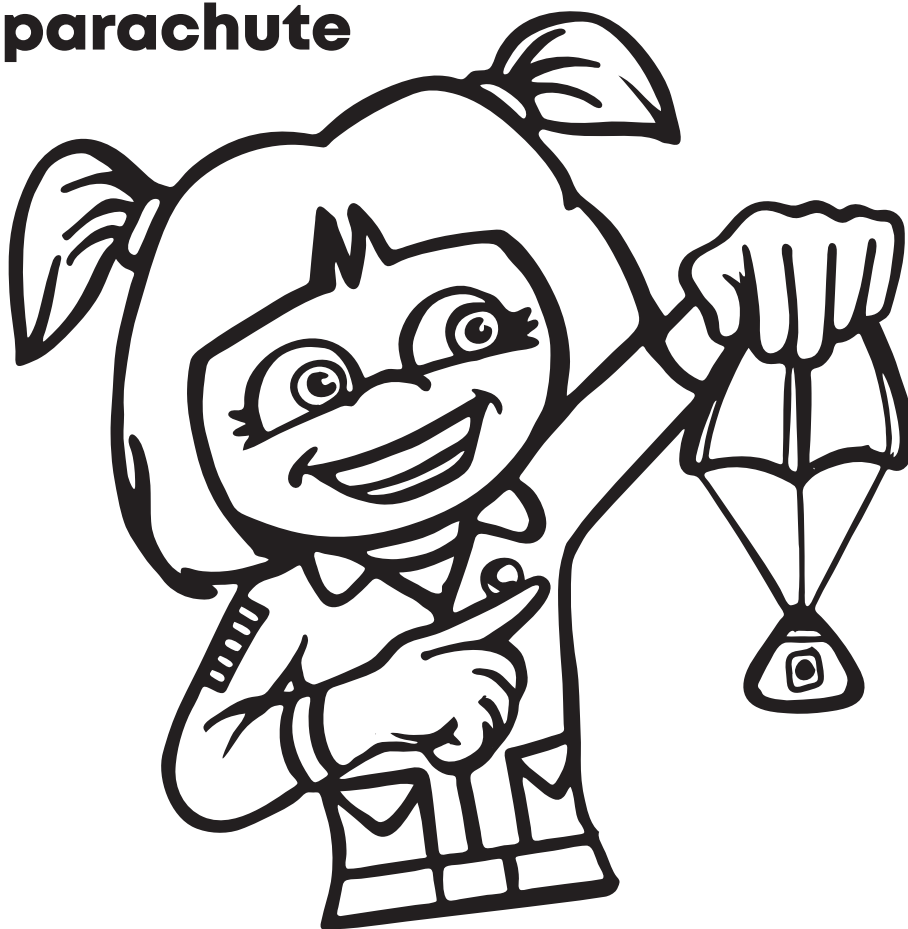
<https://earthobservatory.nasa.gov/blogs/eokids>



# Pp

## for parachute

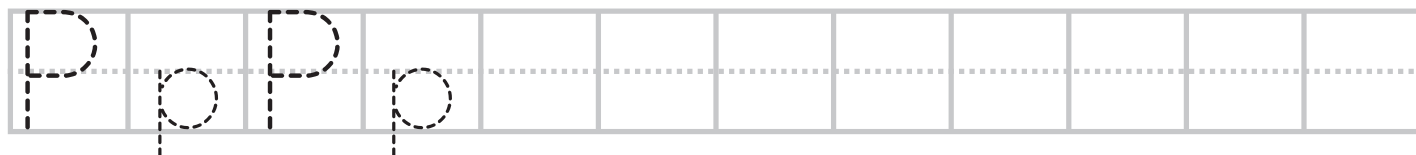
National Aeronautics and  
Space Administration



CLICK THE LINK TO TRY YOUR HAND AT A  
FUN PARACHUTE ACTIVITY:

[HTTPS://WWW.JPL.NASA.GOV/EDU/TEACH/  
ACTIVITY/PARACHUTE-DESIGN/](https://www.jpl.nasa.gov/edu/teach/activity/parachute-design/)

parachute



COMMERCIAL  
**CREW**

[www.nasa.gov](http://www.nasa.gov)

SP-2019-02-067-KSC

A **parachute** canopy is large and made of fabric that can trap lots of air to slow down the speed of a person or spacecraft.

# Qq

for questions

National Aeronautics and  
Space Administration



questions

Q	q	Q	q											
---	---	---	---	--	--	--	--	--	--	--	--	--	--	--

COMMERCIAL  
**CREW**

[www.nasa.gov](http://www.nasa.gov)

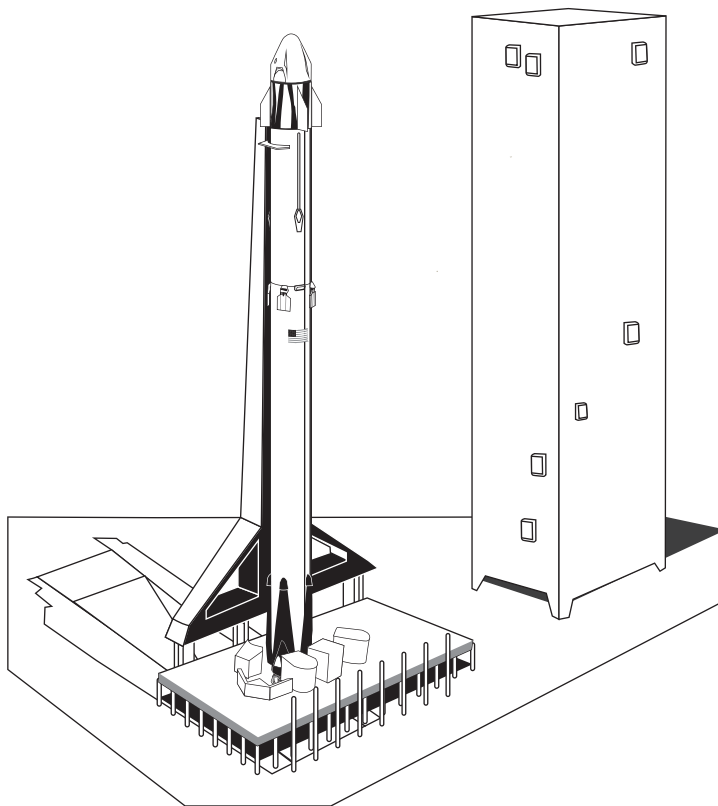
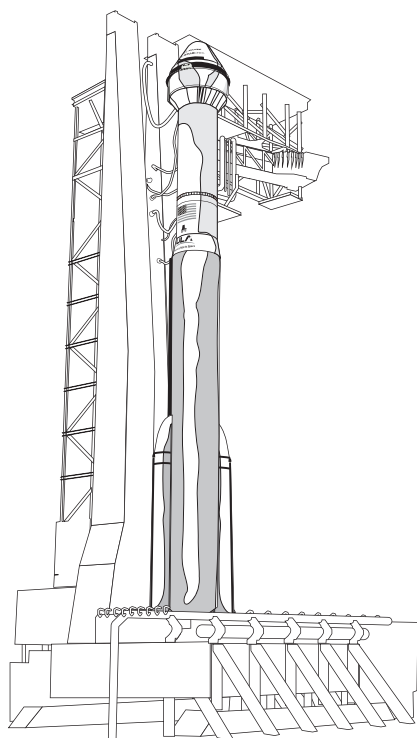
SP-2019-02-286-KSC

A scientist is a person who asks questions  
and follows steps to find answers.  
Name some question words.

# Rr

## for rocket

National Aeronautics and  
Space Administration



rocket

Rr Rr

COMMERCIAL  
**CREW**

[www.nasa.gov](http://www.nasa.gov)

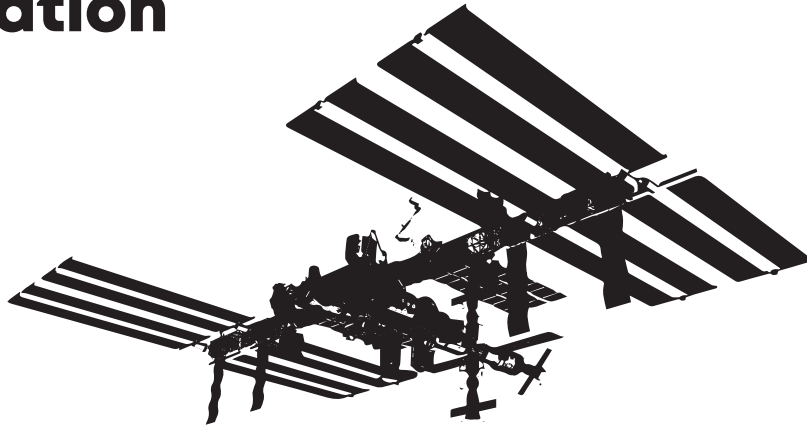
SP-2019-02-262-KSC

NASA uses different rocket types to transport people and supplies to the International Space Station.

# Ss

for station

National Aeronautics and  
Space Administration



station

[spotthestation.nasa.gov](https://spotthestation.nasa.gov)

S	s	S	s								
---	---	---	---	--	--	--	--	--	--	--	--

COMMERCIAL  
**CREW**

[www.nasa.gov](https://www.nasa.gov)

SP-2019-02-287-KSC

The International Space **Station** is an orbiting habitat where astronauts can live and work. Go to [spotthestation.nasa.gov](https://spotthestation.nasa.gov) and view the **station** in your night sky.

# Tt

for team

National Aeronautics and  
Space Administration



team

t	t	t	t	t								
---	---	---	---	---	--	--	--	--	--	--	--	--

COMMERCIAL  
**CREW**

[www.nasa.gov](http://www.nasa.gov)

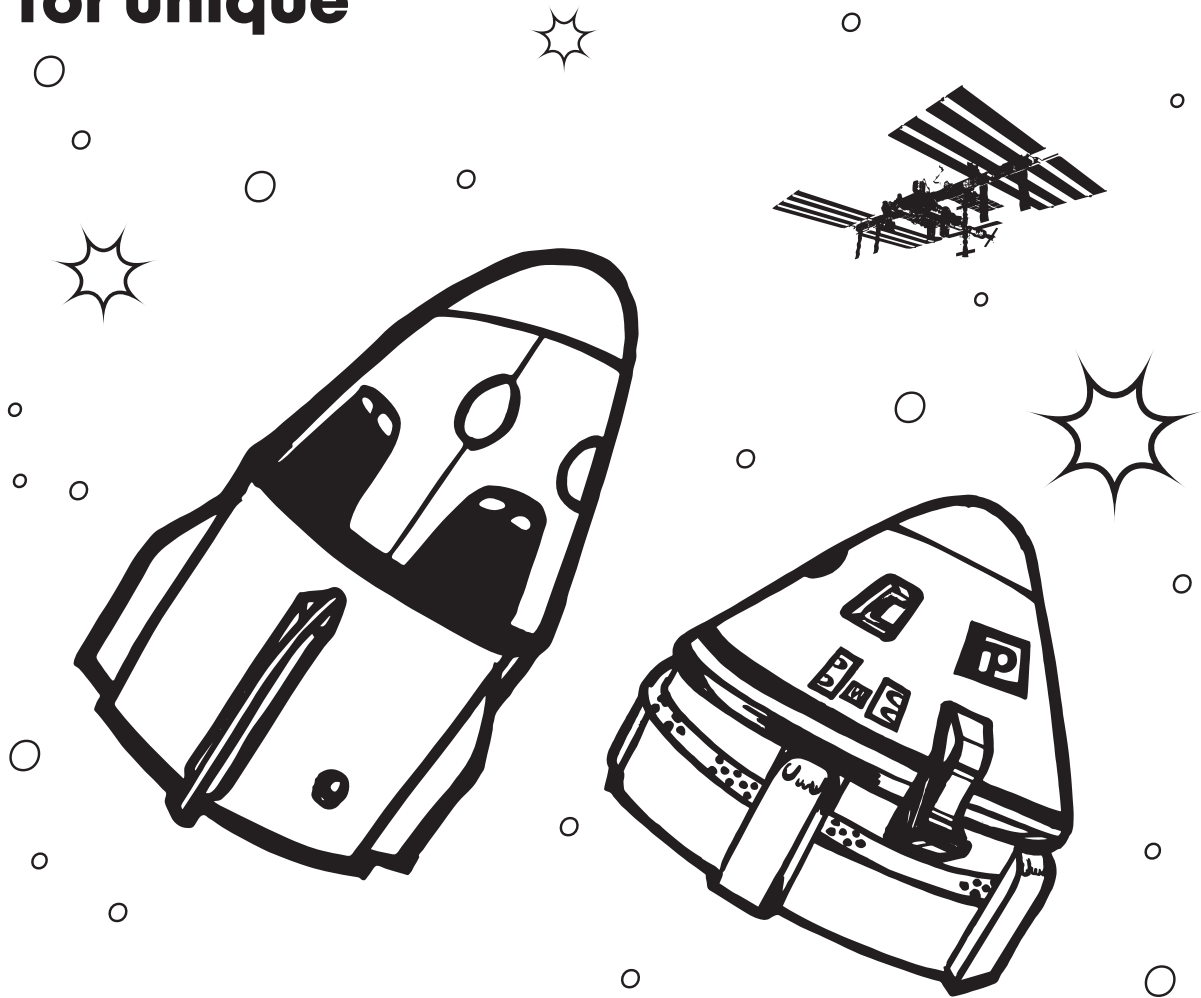
SP-2019-02-263-KSC

The NASA **team** designs and builds spacecraft, plans missions, launches rockets, and recovers space capsules after they land back on Earth.

# Uu



for unique



unique

U	U	U	U										
---	---	---	---	--	--	--	--	--	--	--	--	--	--

COMMERCIAL  
**CREW**

Engineers at Boeing and SpaceX imagined and designed **unique** crew vehicles that can transport astronauts to the International Space Station.

# Vv

## for vibration

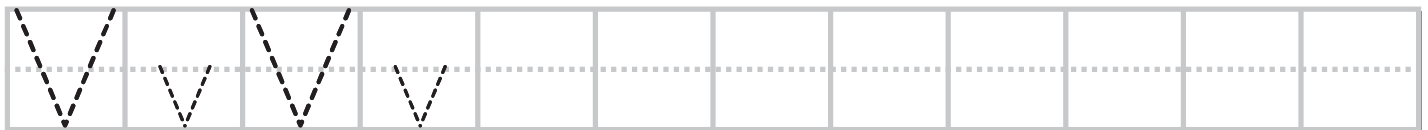
National Aeronautics and  
Space Administration



Hey kids, try your hand at the Astro-Not-Yets: Sound on a String Activity:

[www.nasa.gov/education.ccp](http://www.nasa.gov/education.ccp)

vibration



COMMERCIAL  
**CREW**

[www.nasa.gov](http://www.nasa.gov)

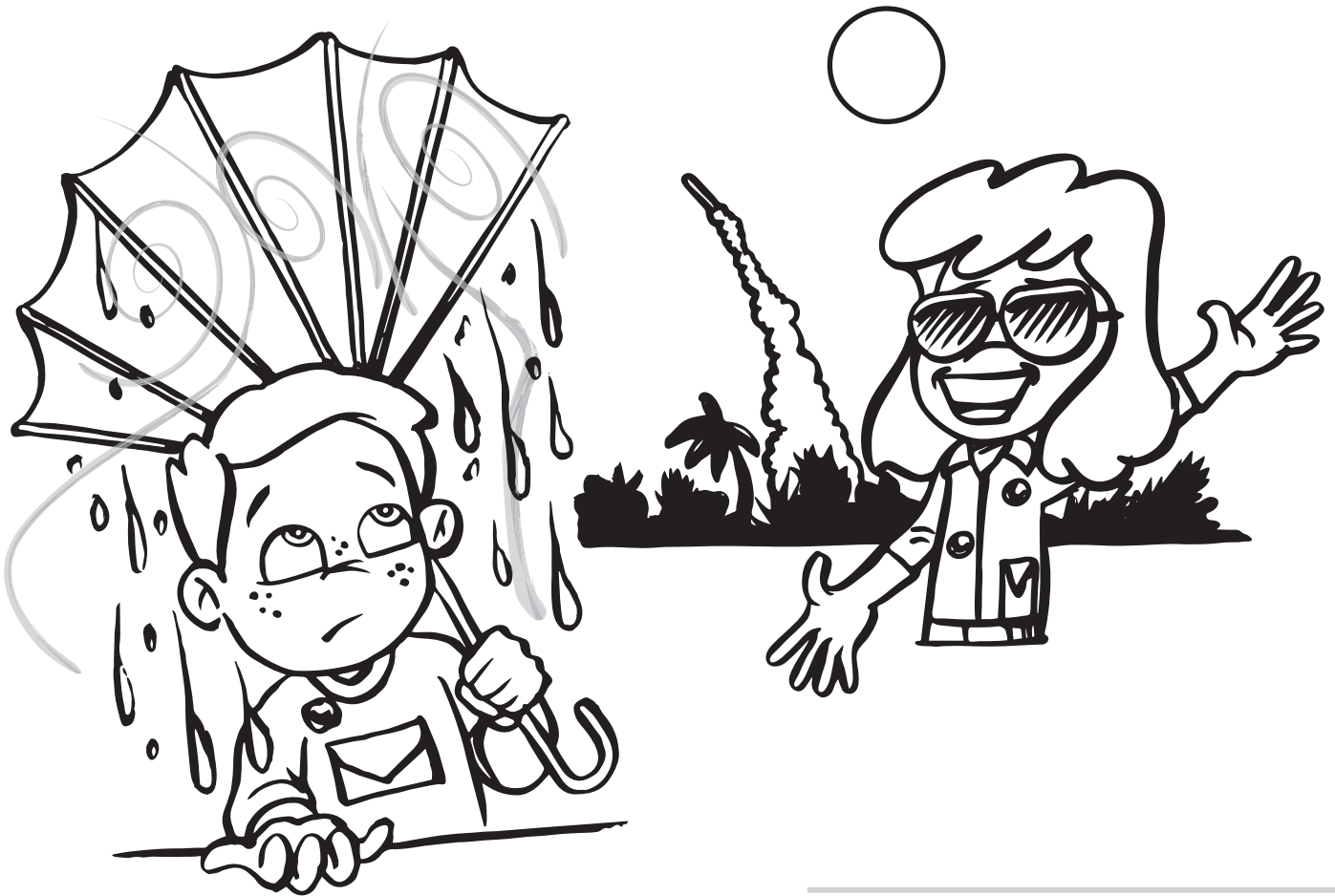
SP-2019-02-289-KSC

Sound is a **vibration** that travels through the air and can be heard when it reaches a person's or animal's ear.

# Ww

## for weather

National Aeronautics and  
Space Administration



weather

W	w	W	w											
---	---	---	---	--	--	--	--	--	--	--	--	--	--	--

COMMERCIAL  
**CREW**

[www.nasa.gov](http://www.nasa.gov)

SP-2019-02-290-KSC

NASA monitors the weather before every rocket launch. What's the weather like in your neighborhood? Is it GO for launch?



# Xx

National Aeronautics and  
Space Administration



for X-ray



X-ray

X	x	X	x								
---	---	---	---	--	--	--	--	--	--	--	--

COMMERCIAL  
**CREW**

[www.nasa.gov](http://www.nasa.gov)

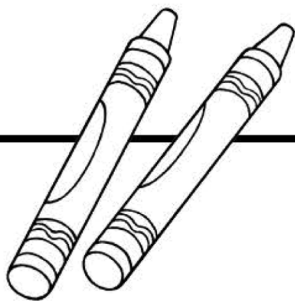
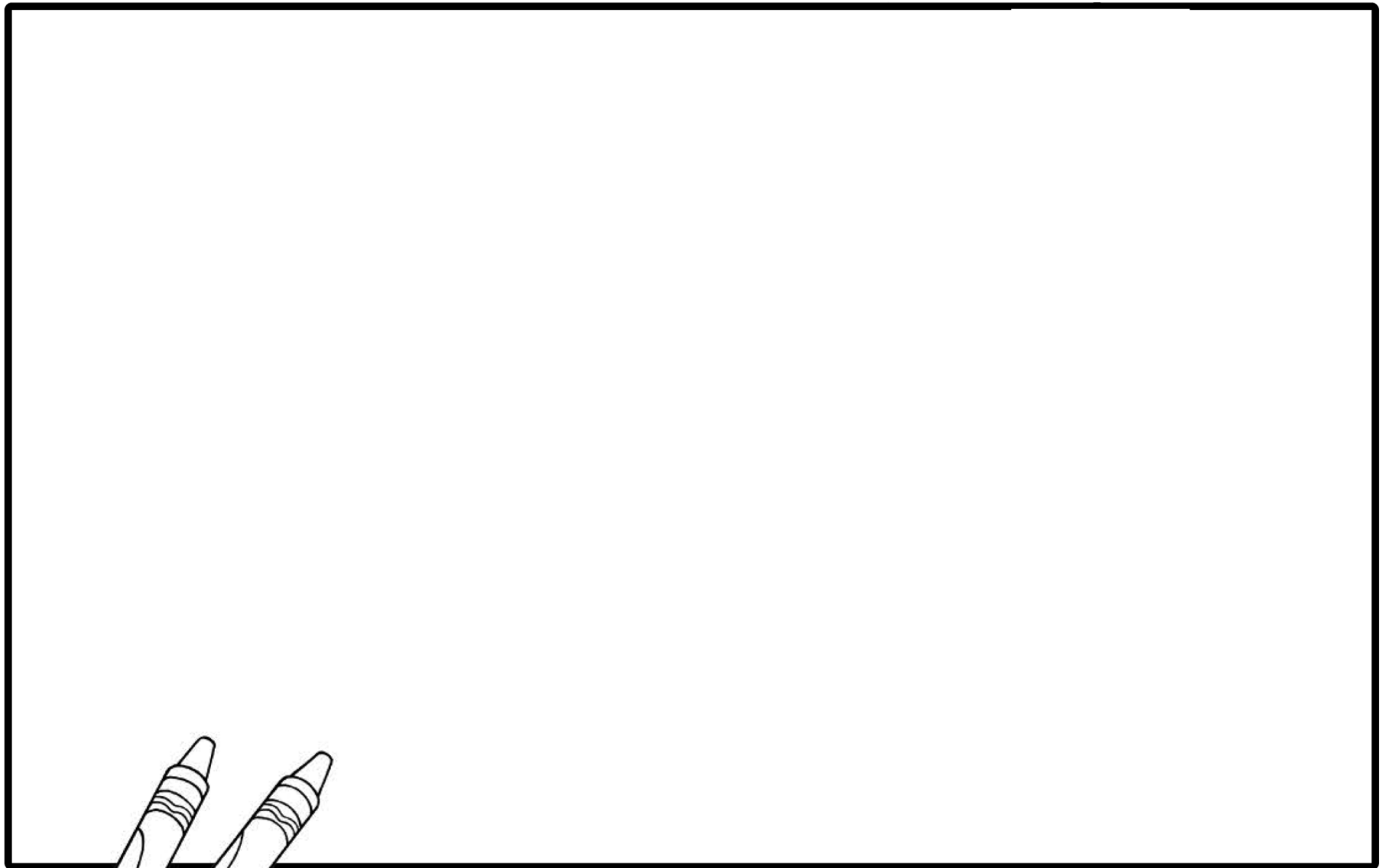
SP-2019-02-291-KSC

An **X-ray** can be used to examine bones on Earth and in space. Astronauts must maintain a healthy diet and exercise because bones can weaken in space.

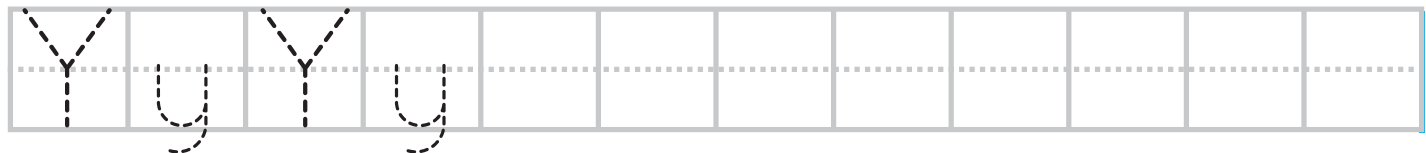
# Yy

## for you

National Aeronautics and  
Space Administration



you



COMMERCIAL  
**CREW**

[www.nasa.gov](http://www.nasa.gov)

SP-2019-02-292-KSC

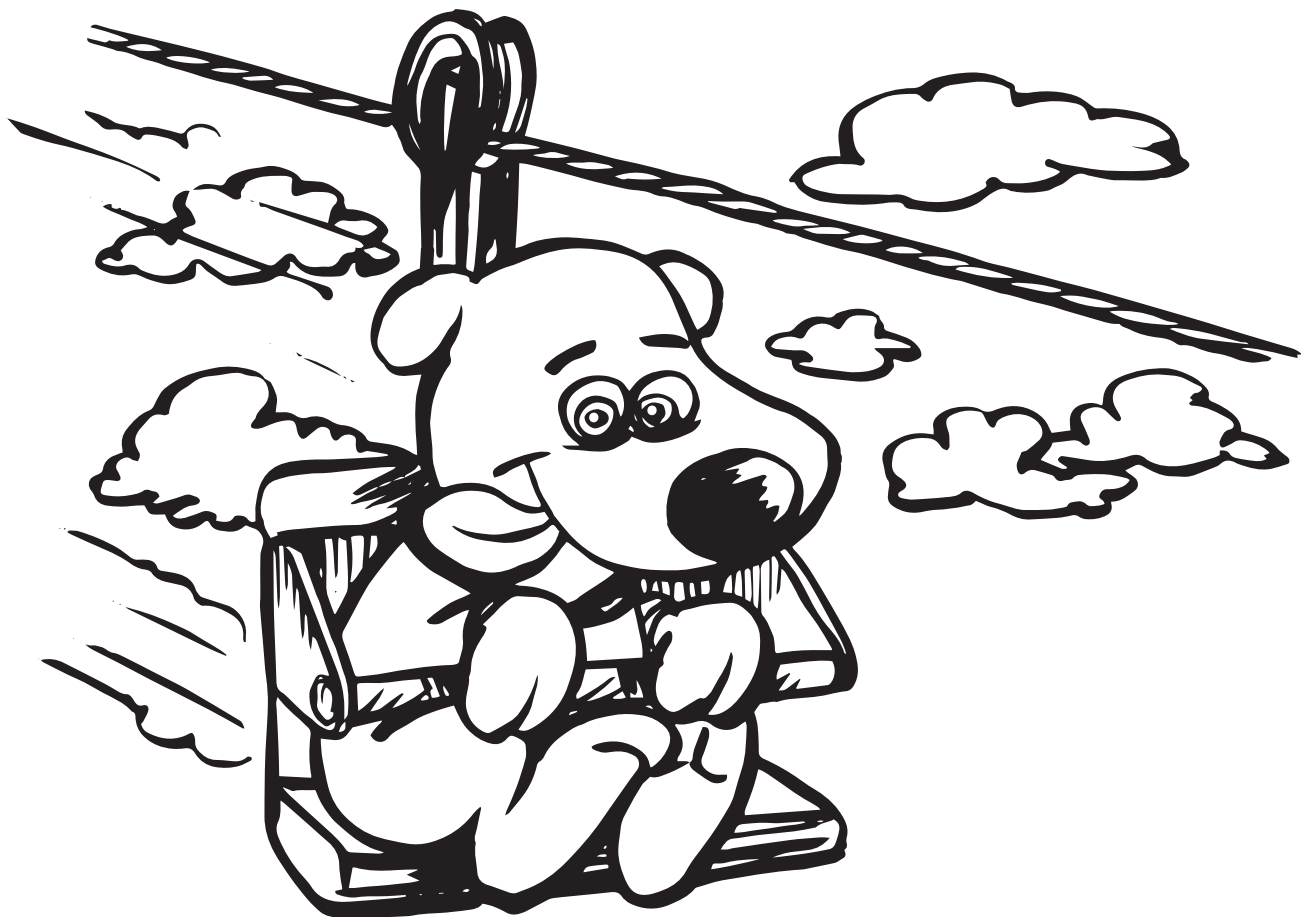
NASA needs **you**! Engineers design and build things to solve problems on Earth and in space. Think of a problem **you** want to solve and draw yourself as an engineer!

# Zz

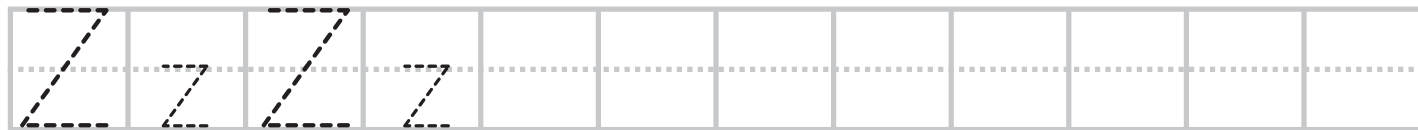
National Aeronautics and  
Space Administration



## for Zipline



Zipline



COMMERCIAL  
**CREW**

[www.nasa.gov](http://www.nasa.gov)

SP-2019-03-324-KSC

In the event of an emergency, astronauts can use an escape system, that works like a zipline, to quickly exit the launch pad.